

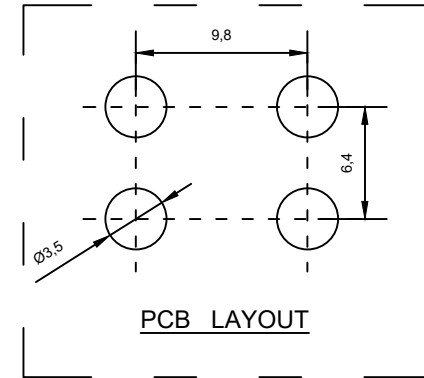
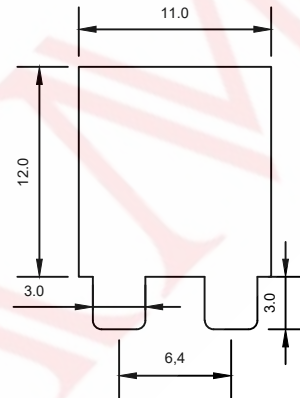
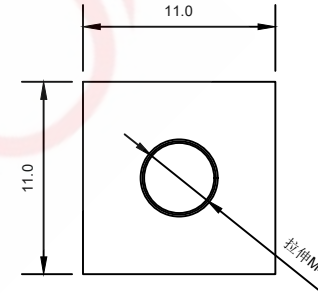
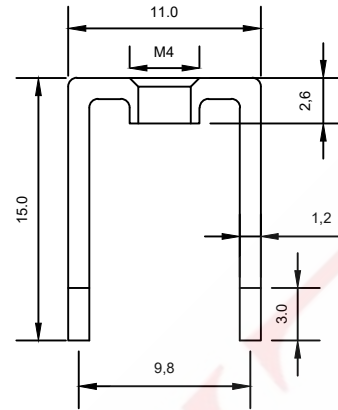
**SAMZO REAC/ROHS**

REV	ECN NO	DESCRIPTION	DESIGN	APPROVAL	DATE
A1	NEW	Replace frame			2018.06.12

技术要求:

**Technical requirements:**

- 打铜底0.5-1UM, 镍底2-2.5UM, 哑锡3-5UM.  
Copper base 0.5 - 1 UM, nickel base 2 - 2.5 UM, matte tin 3 - 5 UM.
- 不得有脚变形, 毛刺等缺陷。  
There shall be no defects such as pin deformation and burrs.
- 插脚尖部符合可焊性要求。  
The tip of the insertion pin shall meet the solderability requirements.
- 螺纹需符合通止规要求。  
The thread shall meet the requirements of the go and no-go gauge.
- 螺纹扭矩: 13lbf.in.  
Thread torque: 13 lbf.in.
- 材质: 黄铜H62 (Y2).  
Material: Brass H62 (Y2).
- 过载电流: 65A  
Overload current: 65A
- 螺孔为拉伸M4  
The screw holes are M4
- 未标注尺寸公差值按GB/T1184-1996H级  
Unmarked dimensional tolerance values are in accordance with Grade H of GB/T1184-1996



**11 120 30 0 M\***  
 SERISE: 11\*11mm  
 HIGH: H12.0mm  
 FOOT HIGH: H3.0mm  
 CUSTOM CODE: ROUTINE  
 SCREW HOLE: M4

ITEM	DESCRIPTION	MATERIAL	QTY	FINSH/COLOR	DESIGN	DATE			
A	Subject	H62(Y2)	1	tin plating					
GENERAL TOLERANCE							≥0~2<	±0.15	
					DESIGN	WANGUIFA	2018.06.12	≥2~5<	±0.25
					CHECKED	ZHENGUILAN	2018.06.12	≥0~2<	±0.15
F					APPROVED	LILIANJIANG	2018.06.14	≥5	±0.35

FIRST VIEW

SCALE: 1:1 UNIT: mm

**SAMZO COMPONENTS**  
Electronic switch and connector manufacturer

The copyright belongs to samzo parts [China] Co., Ltd. please use the material after samzo parts agree to authorize. The final right of interpretation belongs to samzo parts.  
WWW.KKK-JP.COM

TITLE: 11*11*12+3MM (M4-6H)
DWG NO: 180327-P1
PART NO: 11120-180327
MODEL NO: 11120300-M*
NAME: PCB soldering terminal