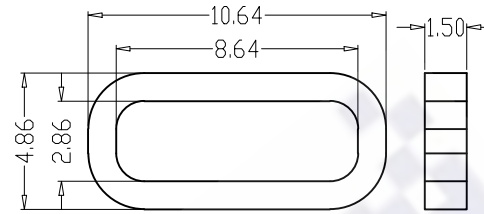
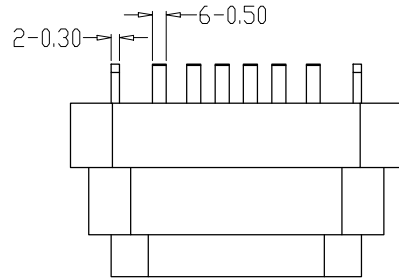


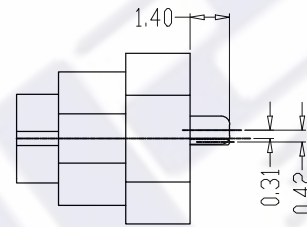
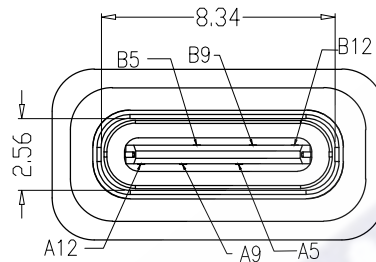
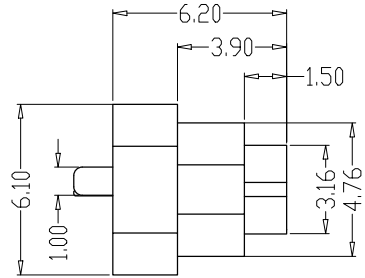
NOTES:

SPECIFICATION:

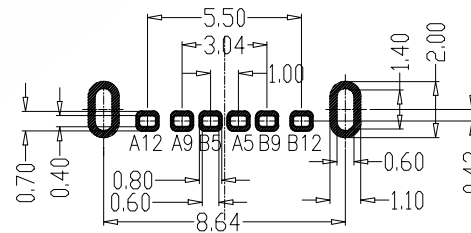
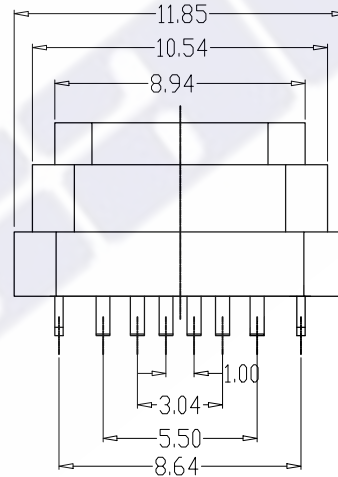
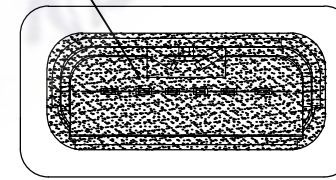
1. CURRENT RATING: 3.0A MAX
2. VOLTAGE: 100 VAC
3. TEMPERATURE RANGE: -40 °C ~ 85 °C
4. CONTACT RESISTANCE: 40 MILLIONHM MAX
5. INSULATION RESISTANCE: 100 MEGOHMS MIN.
6. LNSERTION FORCE : 5N~20N
7. UNMATING FORCE: 8N~20N
8. DURABILITY: 10,000 CYCLES
9. WATER PROOFNESS:THISPRODUCTIS BASED ON IPX7.



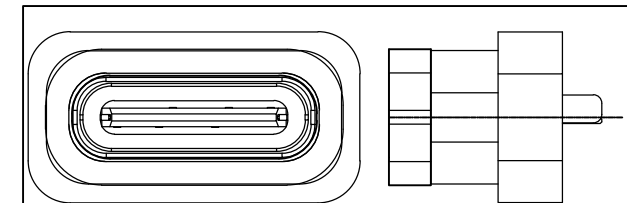
建议胶圈尺寸



此处点胶



TOLERANCE UNSPECIFIED ±0.05mm



加防水圈示意图

5	防水圈	硅胶	BLACK	1PCS
4	SHELL	STAINLESS STEEL	Ni/Cu Plated	1PCS
3	SHELL	PA10T	UL 94V-0 BLACK	1PCS
2	CONTACT	BRASS	Au Plated	1SET
1	MD	HIGH TEMPERATURE PLASTIC	BLACK	1PCS
NO.	DESCRIPTION	MATERIAL	REMARKS	QTY

A5	CC1	B12	GND
A9	VBUS	B9	VBUS
A12	GND	B5	CC2
PIN	SIGNAL NAME	PIN	SIGNAL NAME

The copyright belongs to samzo parts [China] Co., Ltd. please use the material after samzo parts agree to authorize. The final right of interpretation belongs to samzo parts.

X.	±0.50	X.*	± 2°
.X	±0.30	.X*	± 1°
.XX	±0.10	.XX*	± 0.5°
.XXX	± 0.05		

UNITS	mm	三佐部品【中国】股份有限公司		
MAT'L	/			
FINISH	/	PART NO.	MTKEF16LD6ADWNPP	
Q'TY	/	APPD:	JANE	
		CHKD:	MARK	
		DR:	Steven 2022/02/08	
		TITLE:	TYPE C 6P立式直插防水母座	
		DWG NO.:	MTKEF06LD6ADWNPP	
		SCALE	SHEET	REV.
		1/1	1/1	A1