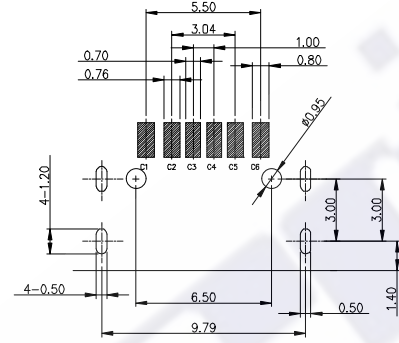
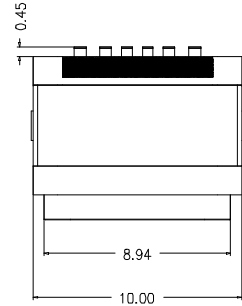
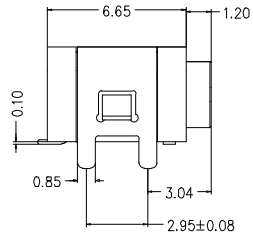


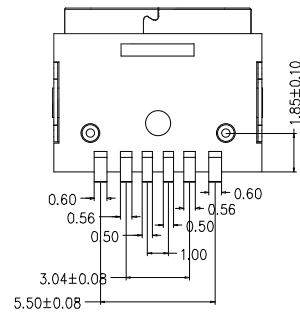
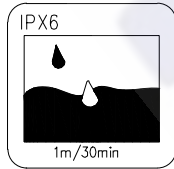
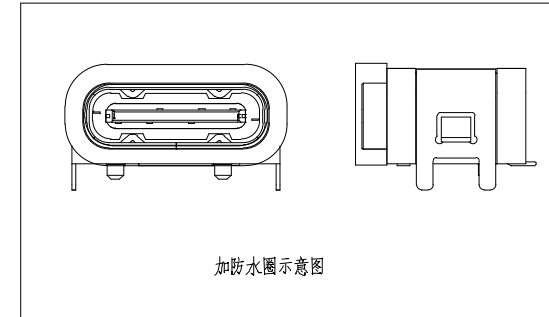
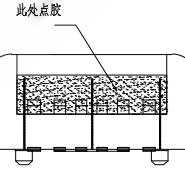
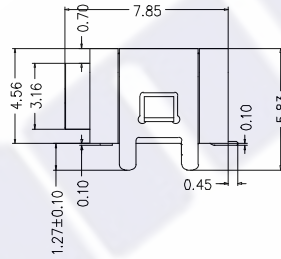
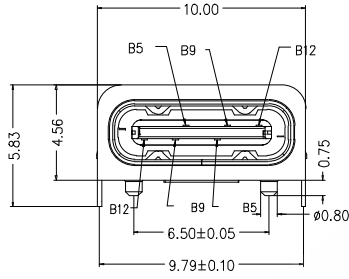
REACH/EE7PIPX6

REV.	ECN. NO.	APPD.



RECOMMENDED P.C.B. LAYOUT
TOLERANCE UNSPECIFIED ±0.05mm

- NOTES:
SPECIFICATION:
1. CURRENT RATING: 3.0A MAX
 2. VOLTAGE: 100 VAC
 3. TEMPERATURE RANGE: -30 °C ~ 85 °C
 4. CONTACT RESISTANCE: 40 MILLIONHM MAX
 5. INSULATION RESISTANCE: 100 MEGOHMS MIN.
 6. LNSERTION FORCE : 5N~20N
 7. UNMATING FORCE: 8N~20N
 8. DURABILITY: 10,000 CYCLES
 9. WATER PROOFNESS: THISPRODUCTIS BASED ON IPX6.



A5	CC1	B12	GND
A9	VBUS	B9	VBUS
A12	GND	B5	CC2
PIN	SIGNAL NAME	PIN	SIGNAL NAME

NO.	DESCRIPTION	MATERIAL	REMARKS	QTY
6	密封胶	硅胶	BLACK	1PCS
5	SHELL	STAINLESS STEEL	Ni Plated	1PCS
4	SHIELDING PLATE	STAINLESS STEEL	Ni Plated	1PCS
3	CONTACT	COPPER ALLOY	TIN/Au/Ni Plated	1SET
2	SHELL HOUSING	HIGH TEMPERATURE PLASTIC	BLACK	1PCS
1	HOUSING	HIGH TEMPERATURE PLASTIC	BLACK	1PCS

The copyright belongs to samzo parts [China] Co., Ltd. please use the material after samzo parts agree to authorize. The final right of interpretation belongs to samzo parts.		UNITS mm	三佐部品【中国】股份有限公司		
X. ± 0.50 X.* ± 2'		MAT'L /	PART NO. MTKEF16WD1EDWNG1N	TITLE: TYPE-C 6PIN 板上四脚防水等级, 单点胶	
.X ± 0.30 .X* ± 1'			APPD: SEAGULL	DWG NO.:	
.XX ± 0.10 .XX* ± 0.5'		FINISH /	CHKD: MASRK	MTKEF16WD1EDWNG1N	
.XXX ± 0.05		Q'TY /	DR: Stev 2016/08/08	SCALE SHEET REV. 1/1 1/1 A1	