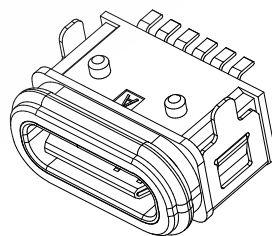
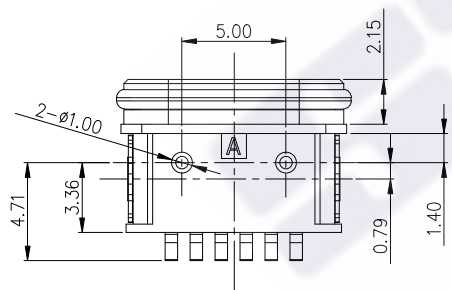
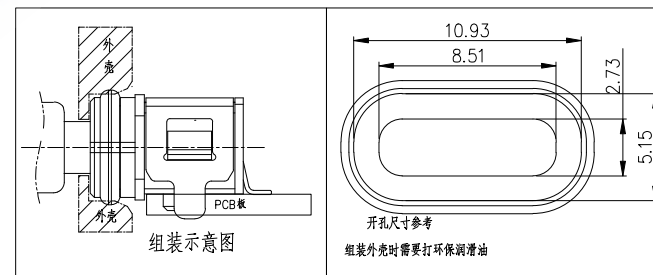
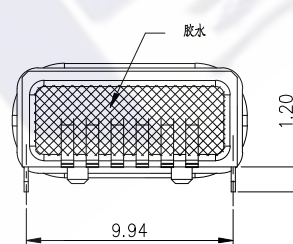
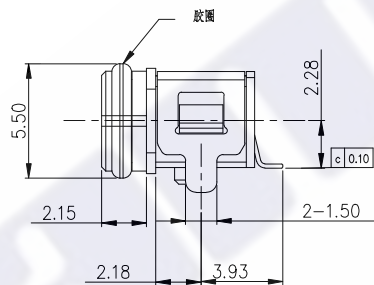
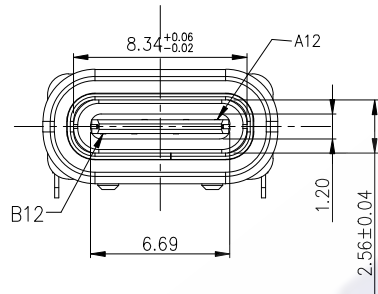


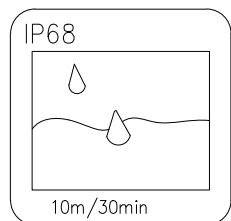
Recommended P.C.B. Layout
Unspecified tolerance: ±0.05
(Top view)

SPECIFICATION:

1. CURRENT RATING: 3.0A MAX
2. DIELECTRIC WITHSTAND VOLTAGE: 100VAC
3. TEMPERATURE RANGE: -30 °C ~ 85 °C
4. CONTACT RESISTANCE: 40 MILLIONHM MAX
5. INSULATION RESISTANCE: 100 MEGOHMS MIN.
6. INSERTION FORCE : 5N~20N
7. UNMATING FORCE: 8N~20N
8. DURABILITY: 10,000 CYCLES
9. WATER PROOFNESS: THIS PRODUCT IS BASED ON IPX8.



A5	CC1	B12	GND
A9	VBUS	B9	VBUS
A12	GND	B5	CC2
PIN	SIGNAL NAME	PIN	SIGNAL NAME



5	Shell2	1	SUS301 Ni Plating T=0.20mm	Ni: 40u"Min;
4	Shell1	1	SUS301 Ni Plating T=0.25mm	Ni: 40u"Min;
3	Housing2	1	PA10T(G.F30%)	
2	Contact	6	Phosphor bronze C5210R-EH Au/Ni Plating T=0.20mm	Ni: 40u"Min; Au: CONTACT AREA, OTHER AREA: G/F
1	Housing	1	PA10T (G.F30%)	
ITEM	PART NAME	Q'TY	FINISH	NOTE

The copyright belongs to samzo parts [China] Co., Ltd. please use the material after samzo parts agree to authorize. The final right of interpretation belongs to samzo parts.		UNITS mm	三佐部品【中国】股份有限公司	
MAT'L	FINISH	PART NO. MTKEF06WT1BDLNG1X	TITLE: TYPE C 6Pin SMT Type	
X. ± 0.50	X.* ± 2*	APPD: SEAGULL	DWG NO.:	
.X ± 0.30	.X* ± 1*	CHKD: SEAGULL	MTKEF06WT1BDLNG1X	
.XX ± 0.20	.XX* ± 0.5*	DR: SEAGULL	SCALE SHEET REV.	
.XXX ± 0.05			1/1	1/2 A1