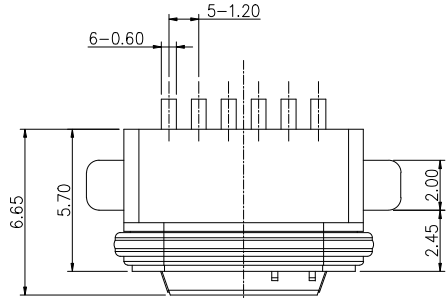
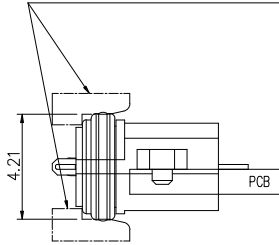


REV.	ECN. NO.	APPD.



设计时孔干涉先减小, 再加胶  
机壳与胶圈干涉建议单边0.15最小, 胶圈尺寸取上限

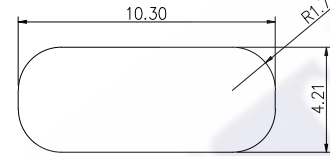


← 装配方向

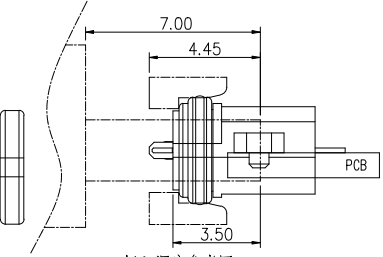
组装示意图

开孔尺寸参考

组装外壳时需要打环保润滑油

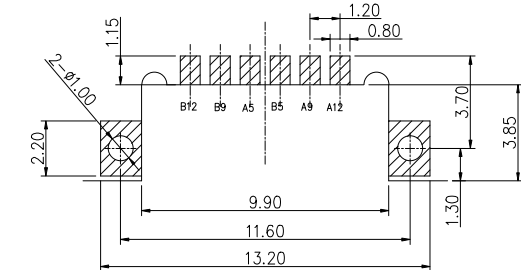
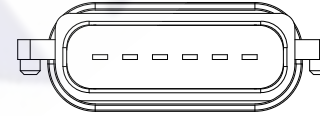
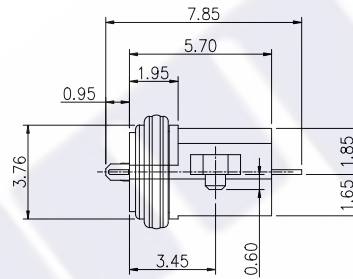
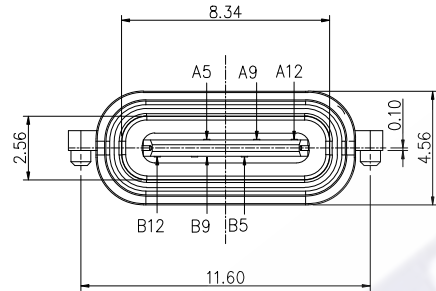


胶圈使用尺寸参考图

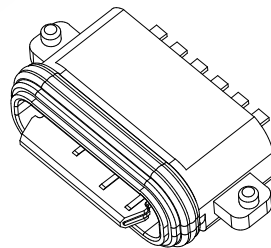
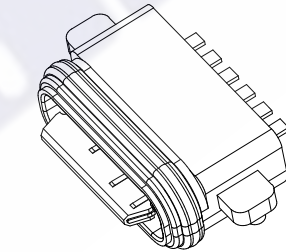
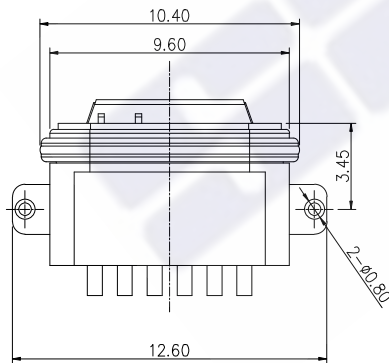
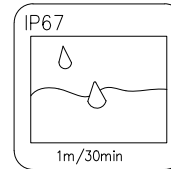


plug插入深度参考图

- SPECIFICATIONS:
- ELECTRICAL CHARACTERISTICS:
    - RATING: 3A;
    - CONTACT RESISTANCE: 30 mΩ MAX.(INITIAL);
    - DIELECTRIC WITHSTANDING: 100V AC MIN.;
    - INSULATION RESISTANCE: 100MΩ MIN.;
  - DURABILITY: 5,000 CYCLES MIN.;
  - INSERTION FORCE: 5-20N;
  - EXTRACTION FORCE: 6-20N;
  - WATER PROOFNESS: THIS PRODUCT IS BASED ON IPX7.
  - PLUG INTERFACE DIMENSIONS CONFORM TO USB2.0 SPEC.
  - PACKAGING: TAPE & REEL.



RECOMMENDED P.C.B LAYOUT  
TOP VIEW (TOLRANCE: ±0.05)



3	Shell	1	Ni Plating	
2	Contact	6	Phosphor bronze Au/Ni Plating T=0.20mm	
1	Housing	1	PA10T (G.F30%)	
ITEM	PART NAME	Q'TY	FINISH	NOTE

X.	± 0.50	X.'	± 2'	UNITS mm	三佐部品【中国】股份有限公司
.X	± 0.30	.X'	± 1'		
.XX	± 0.10	.XX'	± 0.5'		
.XXX	± 0.05				
The copyright belongs to samzo parts [China] Co., Ltd. please use the material after samzo parts agree to authorize. The final right of interpretation belongs to samzo parts.				FINISH	PART NO. MTKEF06ET1ADWNXH
				Q'TY	TITLE: TYPE C 6Pin 液液 SMT Type

The copyright belongs to samzo parts [China] Co., Ltd. please use the material after samzo parts agree to authorize. The final right of interpretation belongs to samzo parts.				APPD: RADOM	DWG NO.: MTKEF06ET1ADWNXH
				CHKD: MARK	
				DR: Steven.Rao 2020/03/08	
			SCALE	SHEET	REV.
			1/1	1/1	A1

A5	CC1	B12	GND
A9	VBUS	B9	VBUS
A12	GND	B5	CC2
PIN	SIGNAL NAME	PIN	SIGNAL NAME