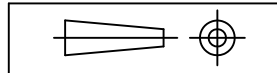
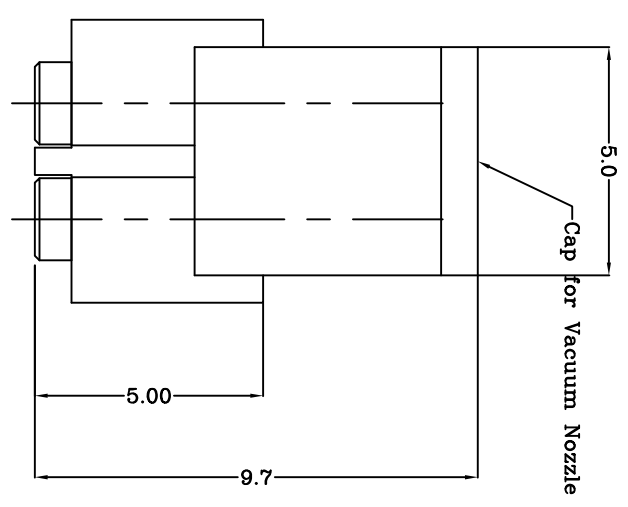
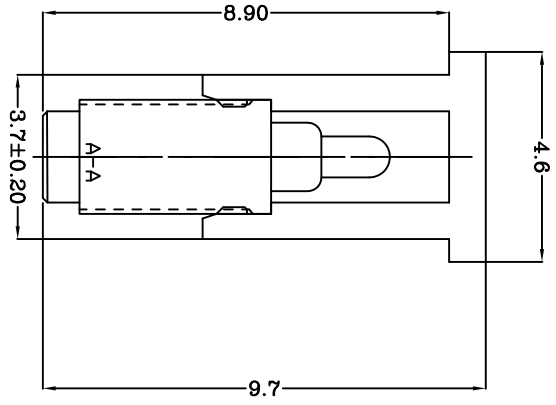
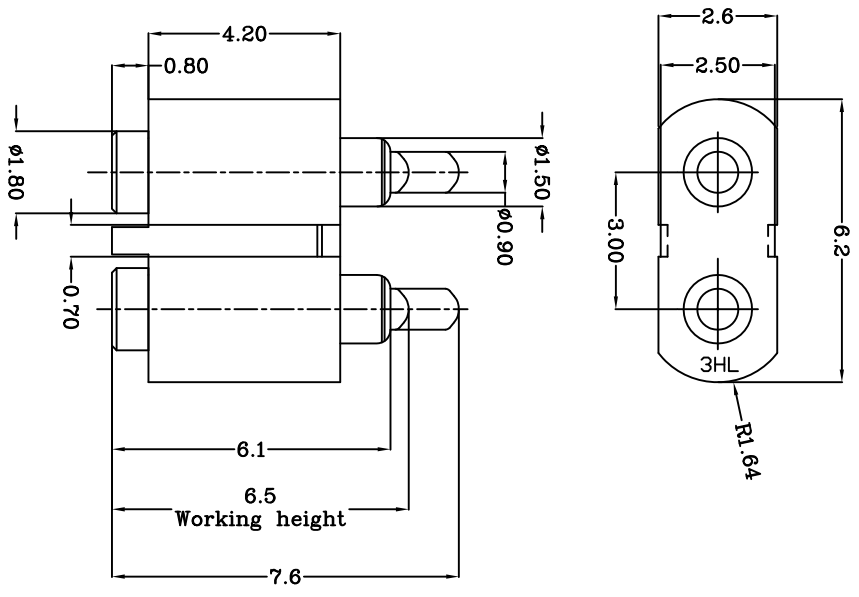


THIS INFORMATION IS CONFIDENTIAL AND IS DISCLOSED TO YOU ON CONDITION THAT NO FURTHER DISCLOSURE IS MADE BY YOU TO OTHER THAN TOP-LINK PERSONNEL WITHOUT WRITTEN AUTHORIZATION FROM TOP-LINK LTD.



DWG NO.
100023-2



- Notes:
- 1 Material: PA 4.6 + 30% Glass fiber; Black (UL 94V-0)
 - 2 General draft 1°.
 - 3 Part shall be free from flash, sharp edges, grease, sink mark, weld lines, porosity.
 - 4 Cavity Identification in this area.

LDC	-
DIST	-

LTR	3.60改爲3.70	APVD	2007/06/22
REVISION RECORD		DATE	

DIMENSIONS IN MM	
TOLERANCES UNLESS OTHER SPECIFIED	
0	= ±
0.0	= ±0.10
0.00	= ±0.10
0.000	= ±
ANGLE: ±1°	
SURF TEXTURE: 3.2/	
REMOVE BURRS, BREAK SHARP EDGES R0.05 MAX DD NOT SCALE PRINT	

MATL	1	HT TR	-	FIN	-
DWN	Benny	APVD	Lansing	PGGD 2P	
CHK	Andy	REL		PGC-1.5-7.6-R-2P-3.0PH	
NAME		PGC-1.5-7.6-R-2P-3.0PH			
SCALE	1:1	A4	DWG NO.	100023-2	
SHEET 1 OF 1		REV C		三佐株式会社	

100023-2
PART NUMBER

USED DN
-

4 3 2 1